



**IMPIANTI TUBAZIONI MONTAGGI INDUSTRIALI**

**CUSTOMIZED PACKAGES**

**60  
YEARS OF  
EXPERIENCE**

# THE WORKSHOP



1. FACTORY PRESENTATION (sh. 3 ÷ 28)
2. PRODUCT PRESENTATION (sh. 29 ÷ 40)
3. PRODUCTION CAPABILITY (sh. 41 ÷ 42)
4. HUMAN RESOURCES (sh. 43)
5. SKID ASSEMBLY AND TOOLS (sh. 44 ÷ 45)
6. COMPANY CERTIFICATIONS (sh. 46 ÷ 47)
7. MAIN PARTNERSHIPS (sh. 48)



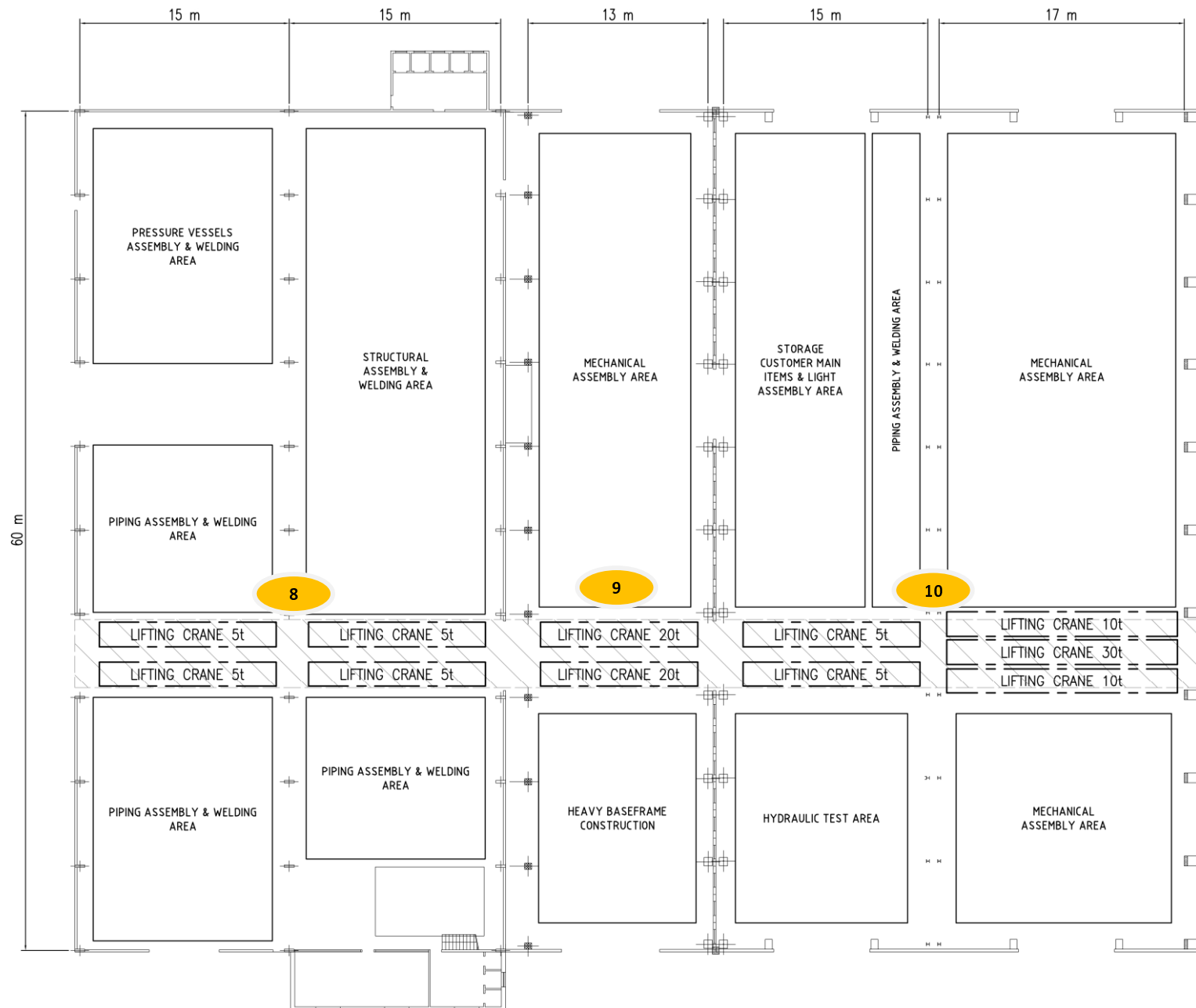




- 1 ADMINISTRATIVES OFFICE
- 2 TECHNICAL OFFICE & QUALITY
- 3 BUNKER & DARK-ROOM
- 4 PRECISION MECHANIC JOBS
- 5 SHOT BLASTIC AND PAINTING

- 6 WAREHOUSE (1)
- 7 WAREHOUSE (2)
- 8 PIPING & STRUCTURAL STEEL FRAMES CONSTRUCTION
- 9 BASE FRAMES & PACKAGES ASSEMBLY
- 10 PACKAGES ASSEMBLY
- 11 TEST -BENCH AREA
- 12 PAINTING STORAGE
- 13 UNCOVERED STORAGE AREA

## WORKSHOP LAYOUT COVERED AREAS





## BRIDGE CRANE LIFTING CAPACITY



### Departments

Bunker  
Precision Mechanic Jobs  
Painting  
Piping & Str. Steel Frame  
Baseframe Assembly  
Package Assembly

### Capacity

N.1	2 tons
N.2	10 / 25 tons
N.1	15 tons
N.4	5 tons
N.2	20 tons
N.5	5 / 10 / 30 tons

## BRIDGE CRANE MAX HEIGHT



### Departments 8-9-10

### Max Height

Piping & Str. Steel Frame

7.6 m

Baseframe Assembly

9.0 m

Packages Assembly

8.3 m

## MOBILE CRANES & OTHER LIFTING SYSTEMS



### **MOBILE CRANE**

No. 6 from tons. 15 to 35

Jib length available m.20 ÷ 40

No. 4 from tons. 0.5 to 12

Jib length available m.4 ÷ 25

### **PLATFORM CARS**

No. 6 from tons. 10 to 100

### **FORKLIFT TRUCK**

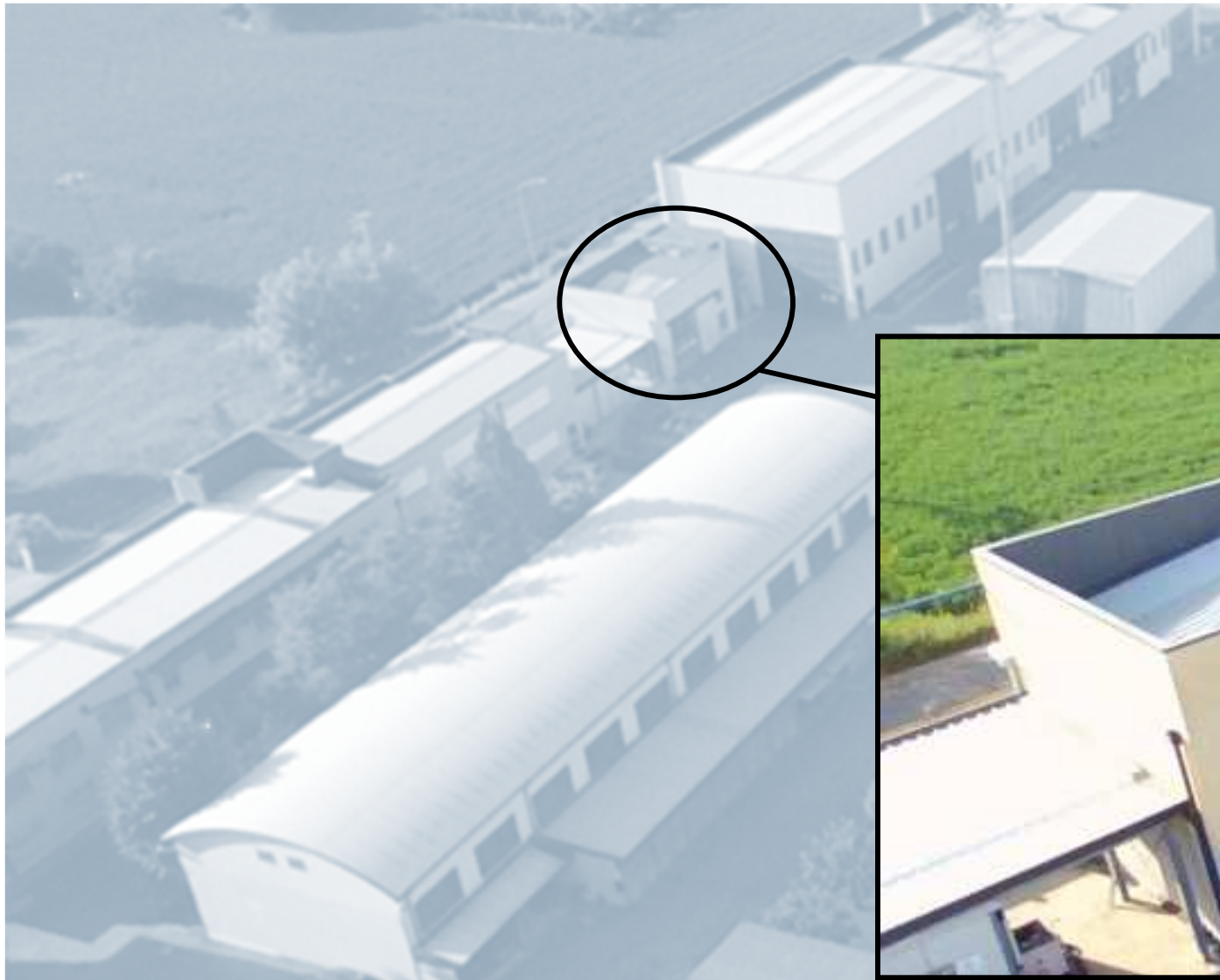
No. 4 from tons. 2.5 to 5

No. 1 - 14 tons





## 3 - BUNKER & DARKROOM



AREA  
60 m<sup>2</sup>



## 3 - BUNKER & DARKROOM



**No. 2 X-RAY apparatus**  
**Type GILARDONI MHFM – 300/3 (Kv/mA)**



**No. 2 Iridium Ry IR 192**  
**Type GAMMAT B/89/B(U) - 96**  
**Capacity: 3TBq=80Ci**

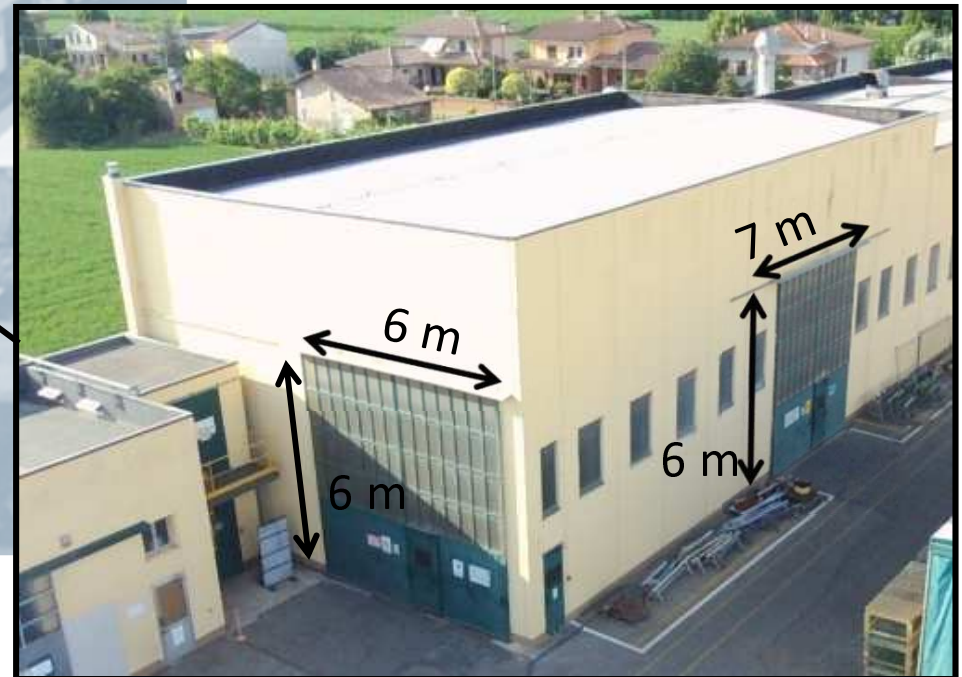


AREA

390 m<sup>2</sup>

LARGE SLIDING DOORS  
OPENING DIMENSIONS

From 6 x 6 m to 7 x 6 m





## 4 - MECHANIC JOBS



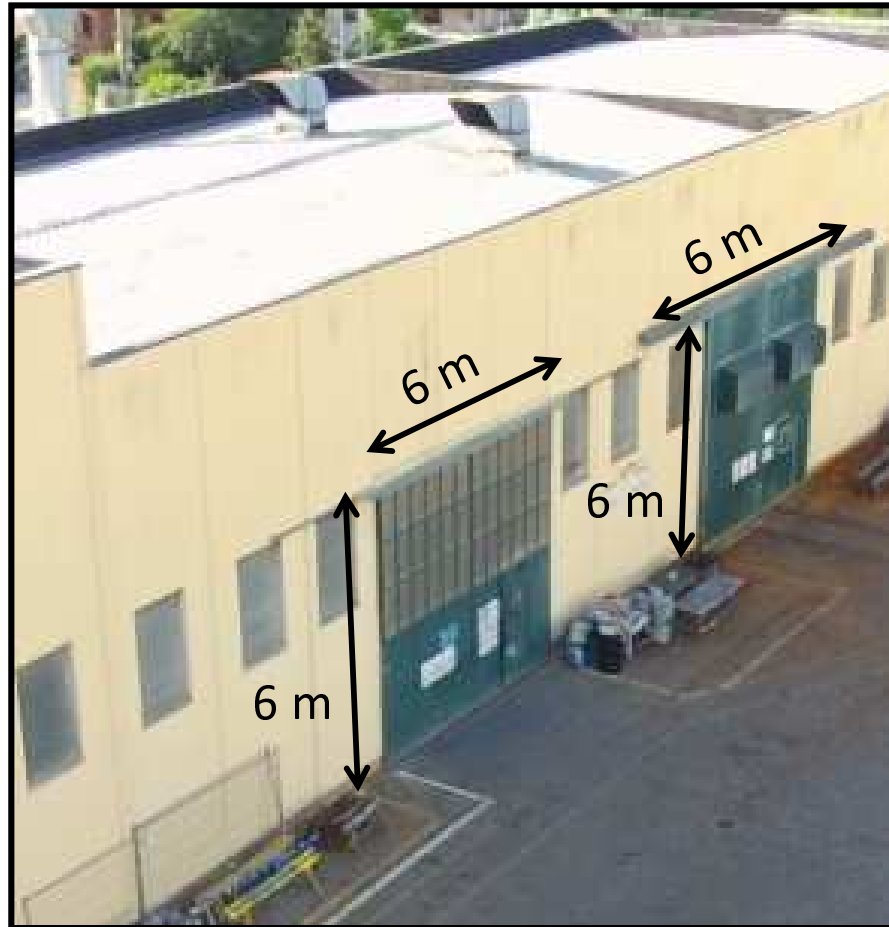
Universal “FRORIEP” a fully automated milling and boring machine, CNC controlled and operating on three axis, allows the machining of items with considerable dimensions in length, height and width (approx. 11m x 4,5m x 1.4m), and weight up to 50÷70 tons. The machine is completed with several special tools for milling, drilling, trading, boring and lapping.



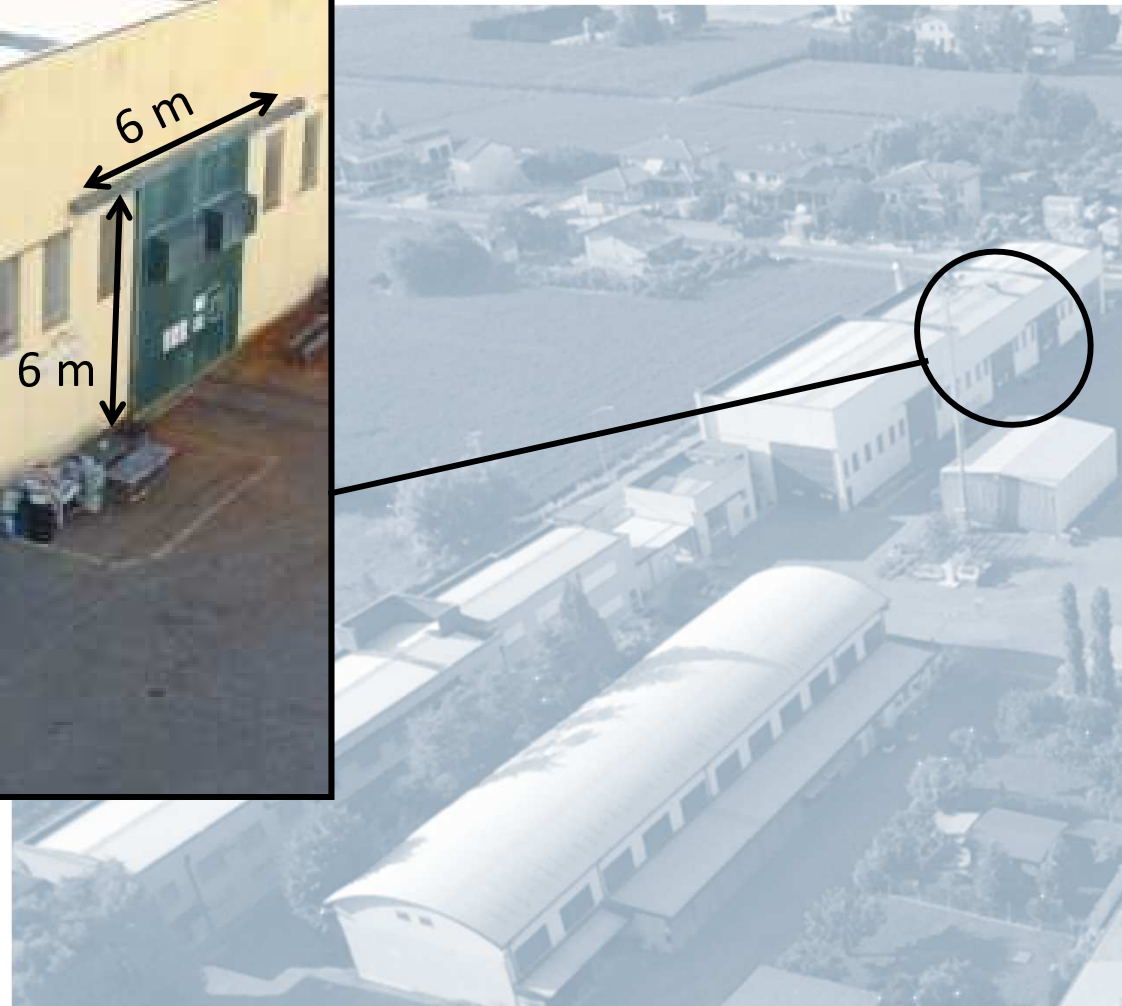
Boring machine “KOMPAKT”  
Milling fixed worktable  
Dimensions 2m x1m x1m (h)

## 5 - SHOT BLASTING AND PAINTING

AREA  
400 m<sup>2</sup>



LARGE SLIDING DOORS  
OPENING DIMENSIONS  
6 x 6 m



## 5 - SHOT BLASTING AND PAINTING

The shot blasting shop consists of an area of 100 m<sup>2</sup>, complete with dust blasting system recovery and testing devices according to current codes. The shot blasting system uses cast steel sharp metallic grit, for the preparation of surfaces as required by applicable painting cycles.

The painting shop consists of an area of 300 sq. meters, fully equipped with floor grids and dry filtering suction system. All in full compliance with local environmental regulations and provided with accurate tools like Pin Hole, Cross Hatch Cut and adhesive paint testing methods. We can execute protective treatments on the basis of the different purposes and conditions of use of the product, such as corrosion, high temperature, oil dripping, abrasive action, etc.

The characteristics of the surrounding area, verified by means of thermo-hygrometer, assure a proper protection against climate conditions, dampness and temperature changes for the whole application and drying cycles. F.B. is qualified according to NORSOK coating procedure (M501 rev.6 cycle 2A, 6B and 6C) and level II inspector FROSIO certified for painting and coating (NS 476).





## 6/7 - WAREHOUSES



LARGE SLIDING DOORS  
OPENING DIMENSIONS  
6 x 6 m

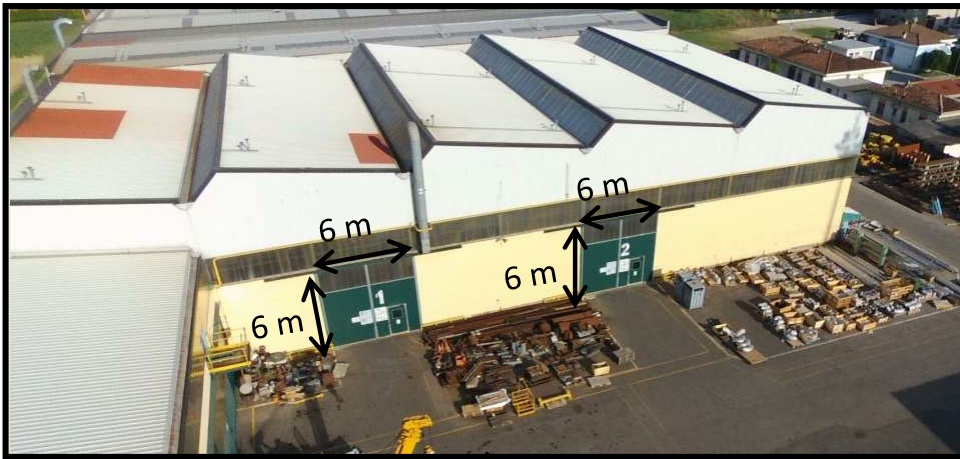


## 6/7 - WAREHOUSES

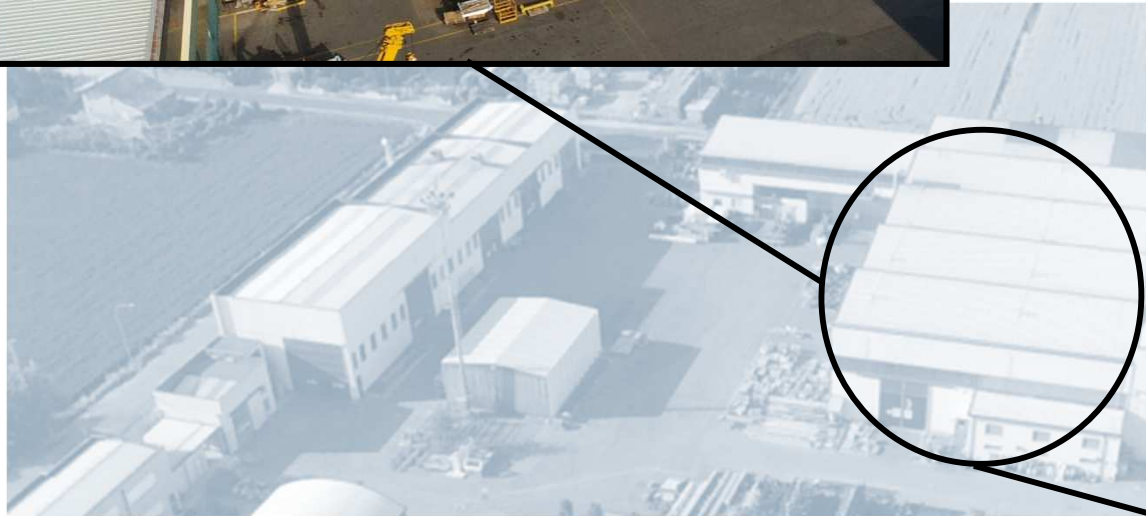




## 8 - PIPING & STRUCTURAL STEEL FRAMES CONSTRUCTION



LARGE SLIDING DOORS  
OPENING DIMENSIONS  
5 x 6 m to 6 x 6 m



AREA  
1800 m<sup>2</sup>

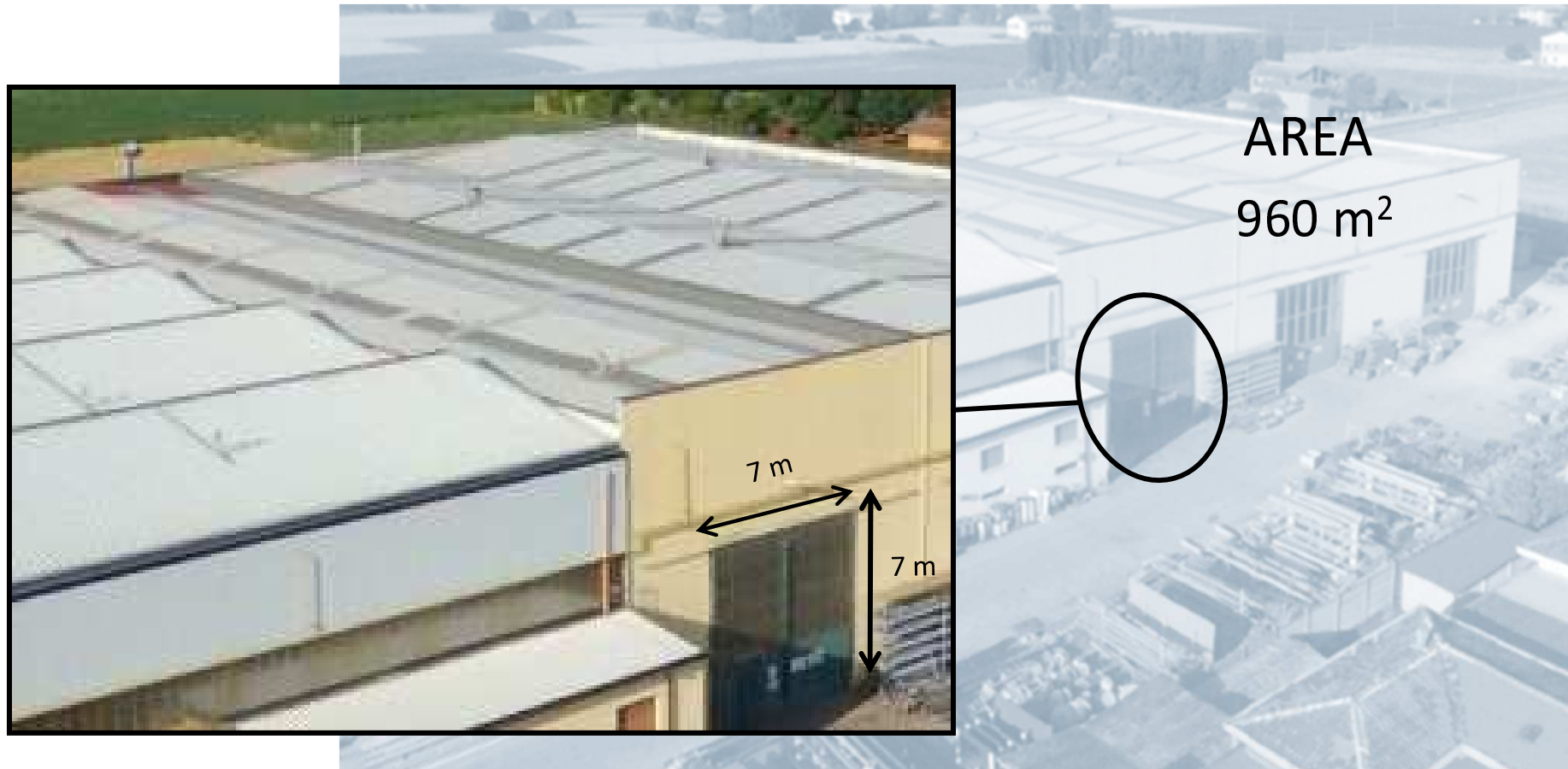




## 8 - PIPING & STRUCTURAL STEEL FRAMES CONSTRUCTION



## 9 - BASEFRAMES & PACKAGES ASSEMBLY



LARGE SLIDING DOORS  
OPENING DIMENSIONS  
7 x 7 m

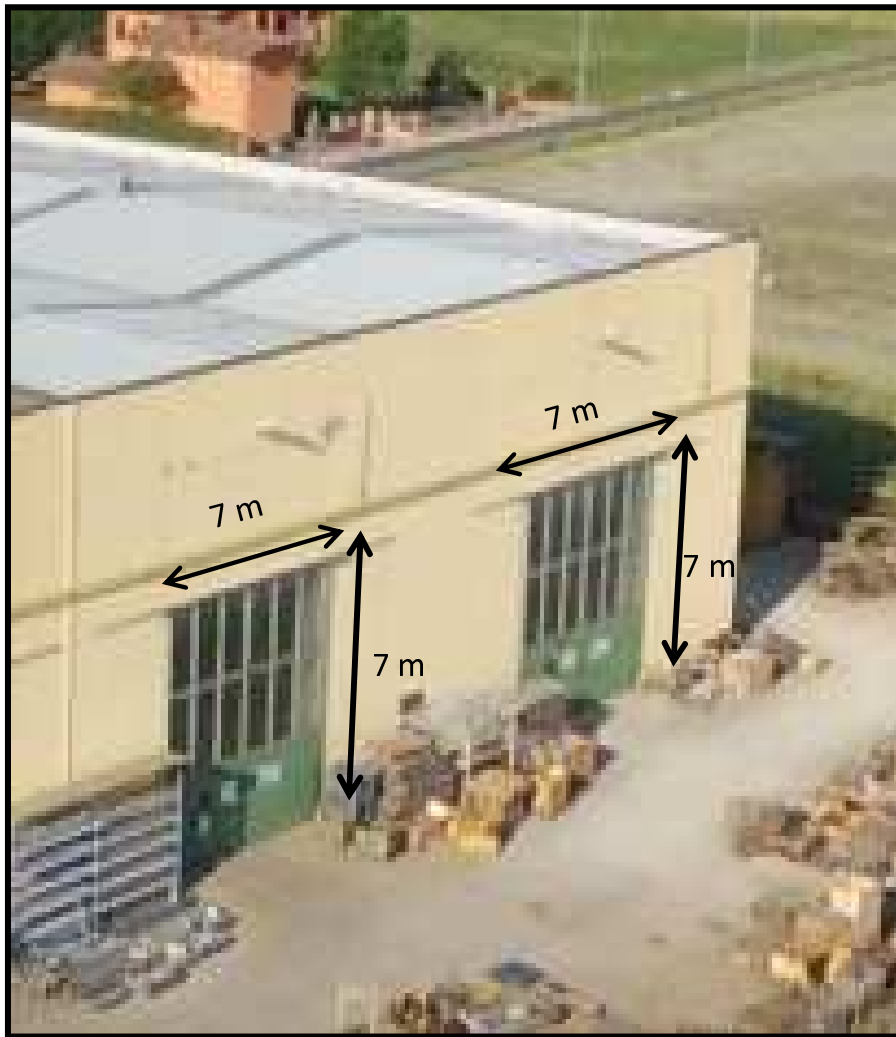


## 9 - BASEFRAMES & PACKAGES ASSEMBLY



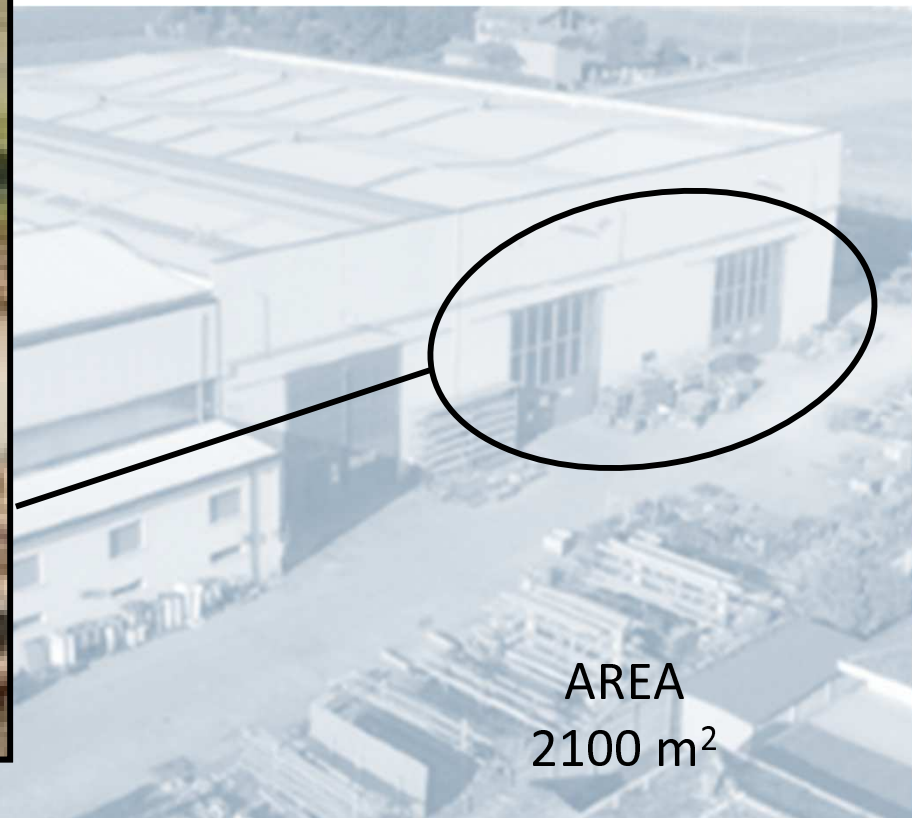


## 10 - PACKAGES ASSEMBLY



LARGE SLIDING DOORS  
OPENING DIMENSIONS

7 x 7 m



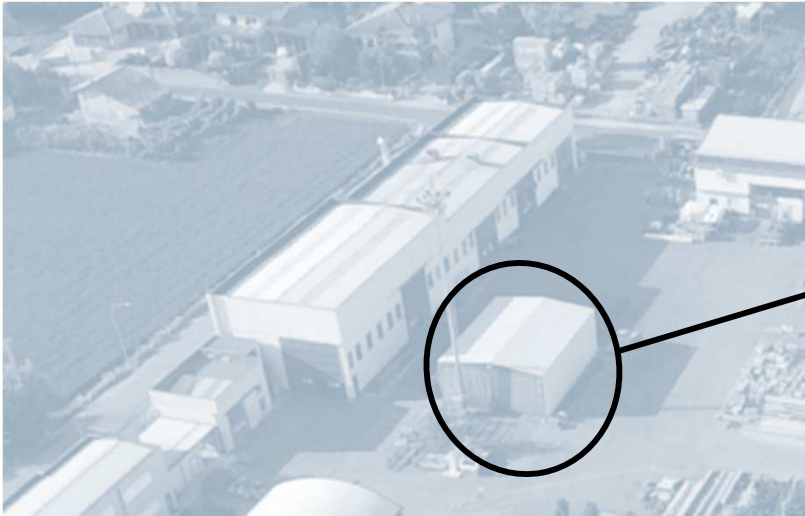
## 10 - PACKAGES ASSEMBLY





## 11 – OUTDOOR TEST-BENCH AREA

AREA 225 m<sup>2</sup>  
Dim. 15 x 15 x 5 m



TYPE OF TESTS  
RUNNING & FULL-LOAD  
VOLTAGE : 6000 V  
POWER: 1000 KW





## 11 - OUTDOOR TEST-BENCH AREA



Centrifugal compressor full load test electric motor driven 1300 kW - 10000 V - 50 Hz  
with external generators

### 11 - OUTDOOR TEST-BENCH AREA



Performance test-run  
Six rows reciprocating  
compressor & auxiliaries



## 11 - OUTDOOR TEST-BENCH AREA



Test-bench internal view  
(liquid ring compressor)



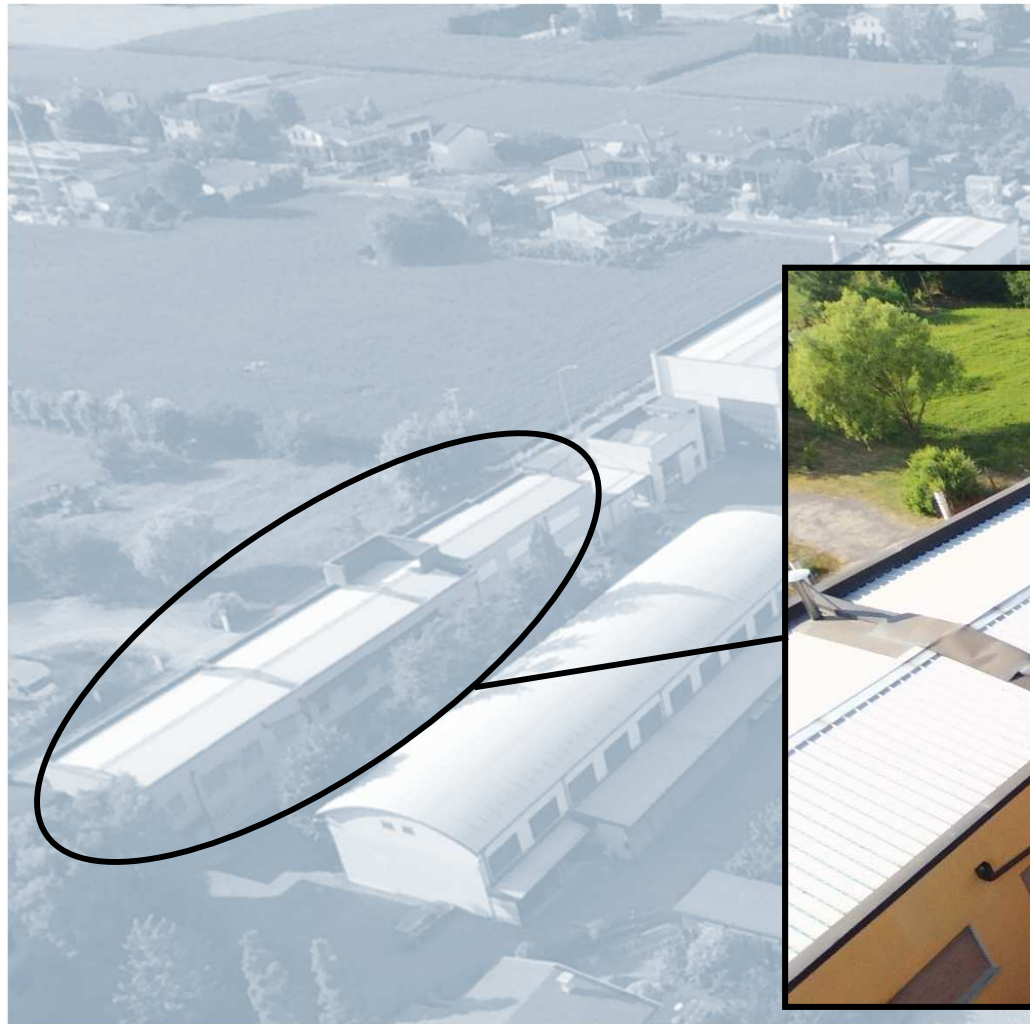
## 13 - UNCOVERED STORAGE AREA



AREA  
4000 m<sup>2</sup>



## ADMINISTRATIVES / TECHNICAL & QUALITY OFFICES



AREA  
500 m<sup>2</sup>



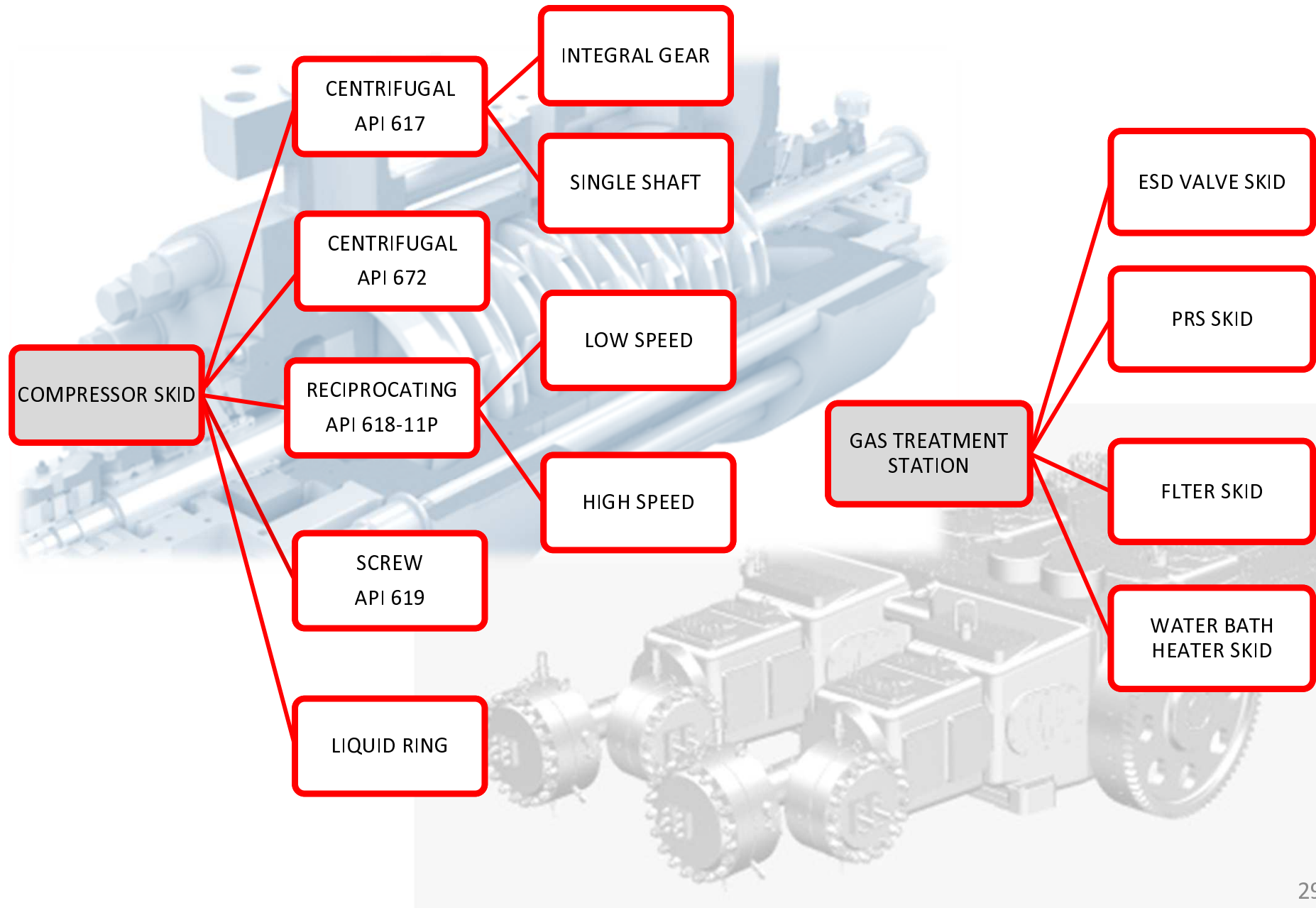
### TECHNICAL & QUALITY OFFICES



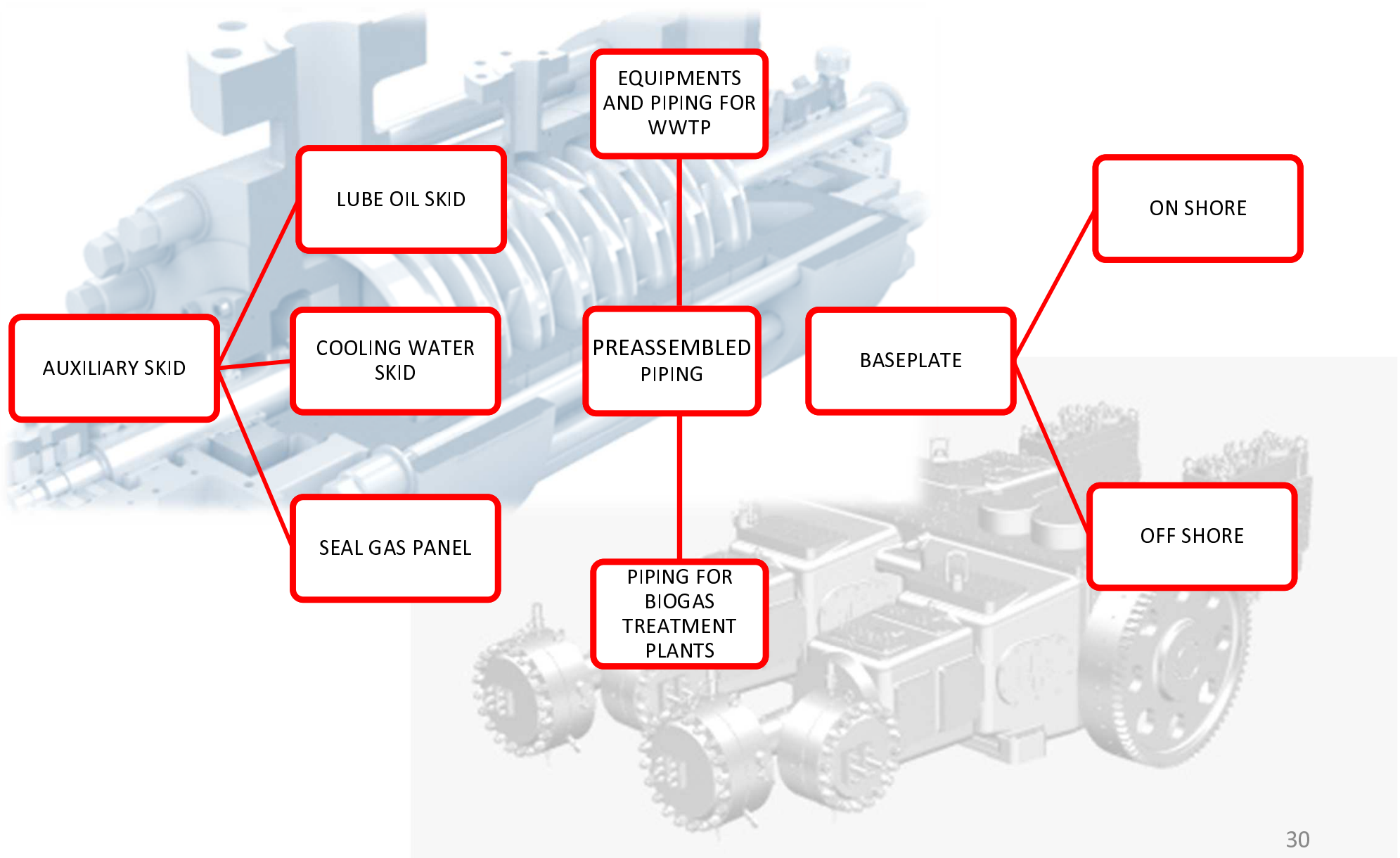
F.B. introduced in its organization a system able to offer valuable technical support for advanced engineering and design activities. The staff employed for these activities include qualified engineers and technicians, supported by outsourced consultants, focused on the special requirements of each project.



## SKID



## AUXILIARY





## CENTRIFUGAL COMPRESSORS PACKAGE 250 UNITS



**STATOIL - Johan Sverdrup Phase 1 - NORTH SEA**



**SBM - Baleia Azul – brazil**



**IBERDROLA– CCGT Project in Lithuanian Power Plant**



**L&T - Bibiyana South 400MW CCGP - BANGLADESH**



## RECIPROCATING COMPRESSORS PACKAGE 400 UNITS



**ENAGAS / FLUOR - Regasification plant Huelva – SPAIN**



**PETRONAS - Rapid HDPE P27 Pengerang – MALAYSIA**



**QCON-QP - Halul Island – QATAR (UAE)**



**ENPPI - Asorc Napha Complex Project (ISBL) - EGYPT**



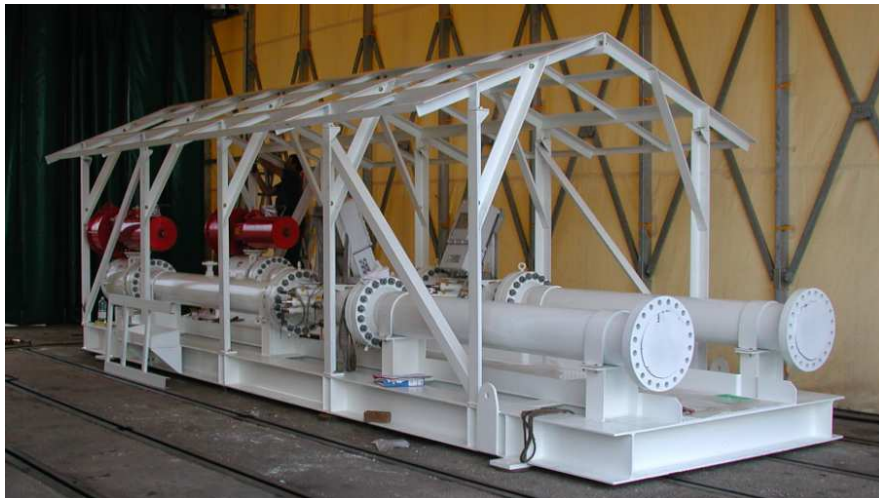
## GAS TREATMENTS STATION SKID



Lebanon Gas Pipeline – SYRIA



Stazione di misura di Masera - ITALY



Barka Oil Fields - OMAN



HOWI BROS. - Syria Lebanon Gas Pipeline

## SCREW OIL FLOATED PACKAGE LIQUID RING COMPRESSORS PACKAGE



*Screw Compressor - WARTSILA – New Shuttle Spirit Tankers Project - CHINA*



*Liquid Ring Compressor – Petroleum Development OMAN LCC Lekhwar  
AGMP AP Gas Recovery Project - OMAN*



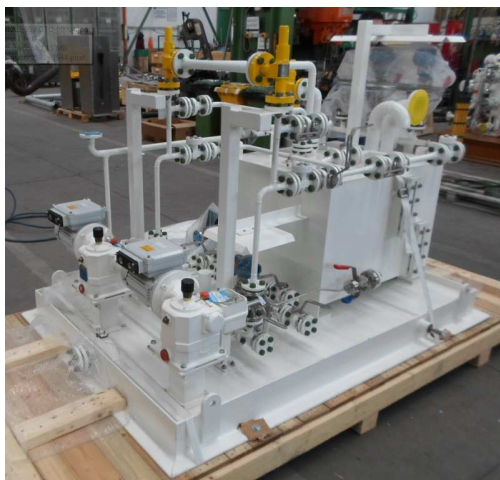
## COOLING WATER SKID



***SFERA LLC - Mosenergo Power Plant (TPP-16) – RUSSIA***



***JGC - BAPCO - BAHRAIN***



***RHIP Project - OMAN***



***ORPIC - LIWA PP/PE2 - OMAN***

## LUBE OIL SKID



**ADMA/OPCO – SARB Project - UAE**



**LUKOIL -Volgograd - RUSSIA**



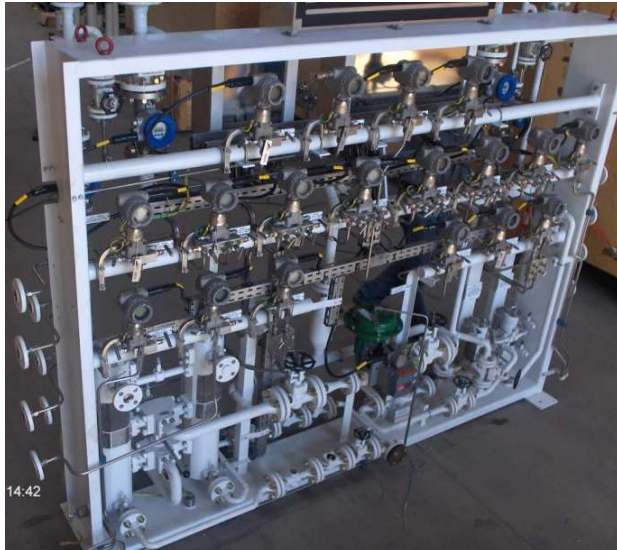
**ORPIC - LIWA PP/PE1 - OMAN**



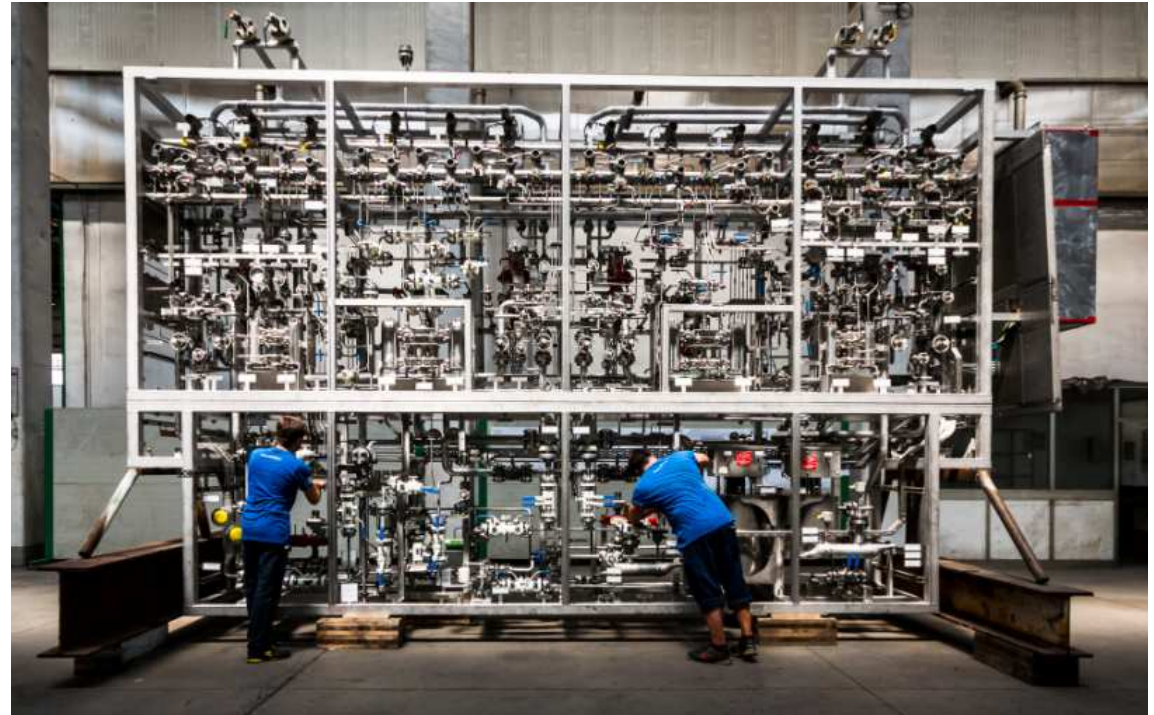
**ORPIC - LIWA PP/PE2 - OMAN**



## SEAL GAS PANEL



**FLUOR/RASGAS - RL(3) Common OFFPLOT Project - QATAR**



**STATOIL - Johan Sverdrup Phase 2 Project - North Sea**



**GASCO - Ruwais 3rd NGL Train Project – ABU DHABI**



**BS140/BS150 - Kuwait**



## PREASSEMBLED PIPING



POLSKIE KONSORCJUM CHEMICZNE SP. Z O.O - PALDISKI / PUIATU Project - BALTIC



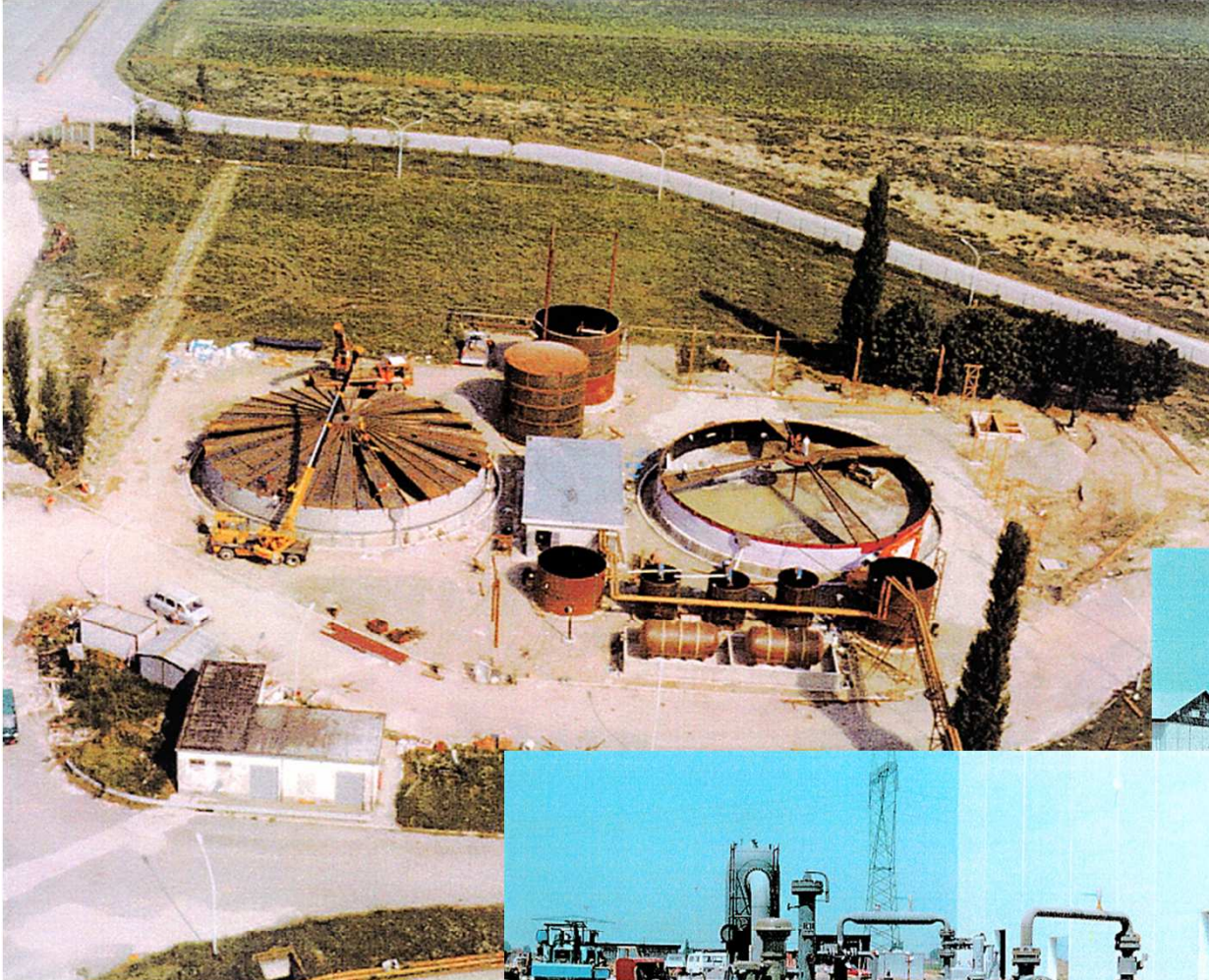
SHELL U.K. – St. Fergus Compression Station – SCOTLAND U.K.



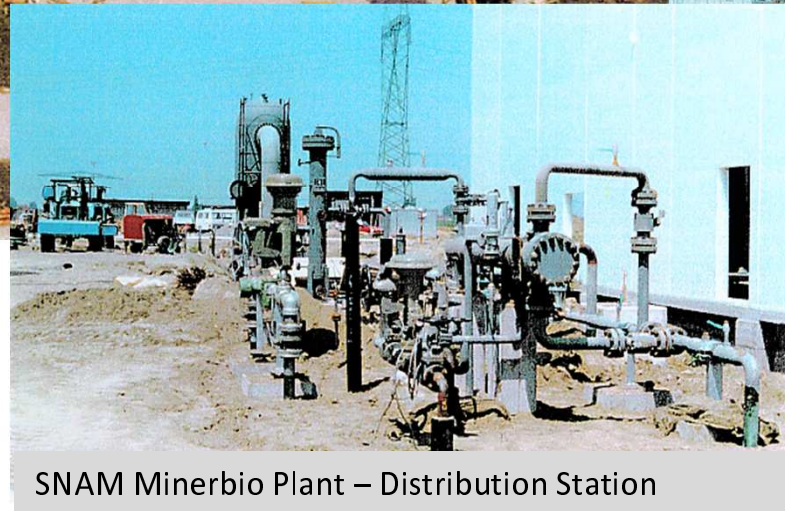
TECHINT - Dunkerque LNG-03 Project – Dunkerque FRANCE



## RENEWABLES



Piping and Equipments for Biogas treatment, recovery and distribution, Waste Water treatment plants (WWTP).



SNAM Minerbio Plant – Distribution Station



SNAM Minerbio Plant – Distribution Station (manufacturing at site)



## BASEPLATE ON SHORE / OFF SHORE



GASCO - Taweelah Gas Compression Station Project - UAE

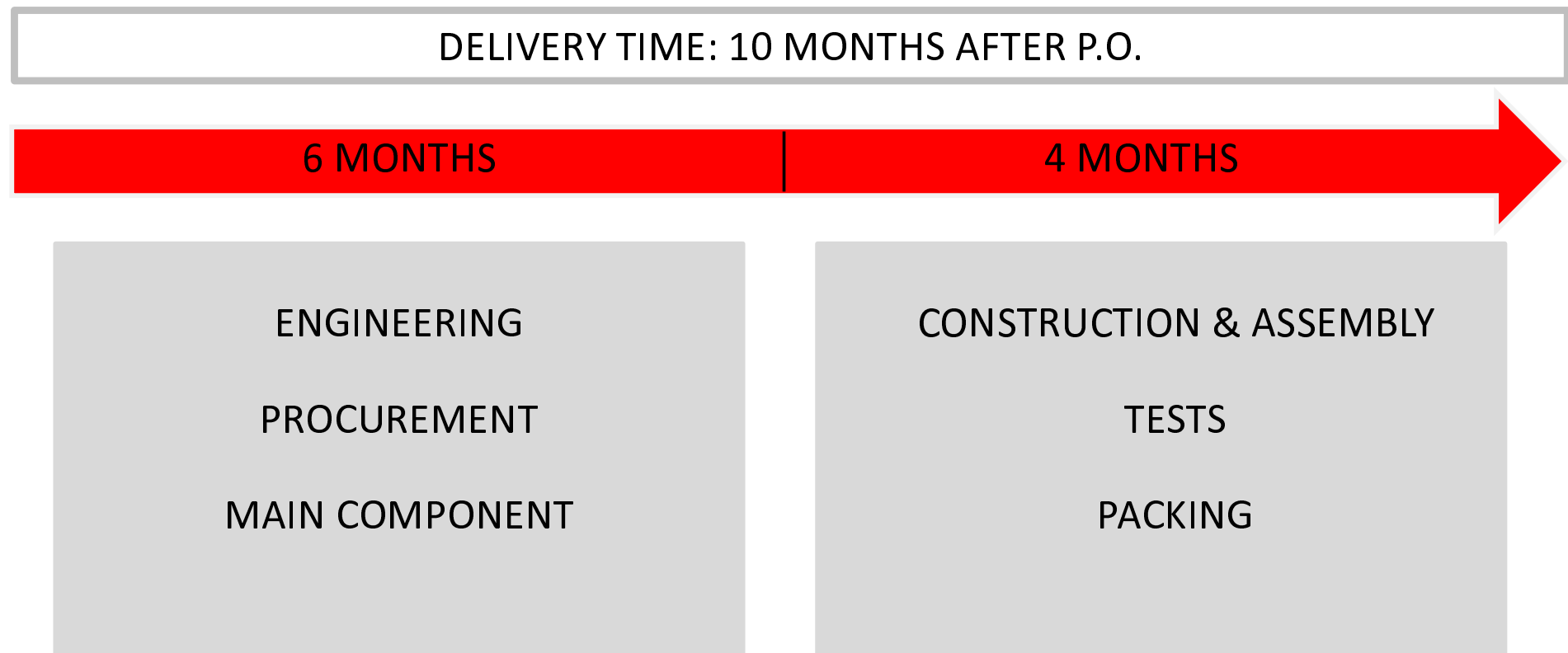


ADCO NEAD BU HASA - ABU DHABI



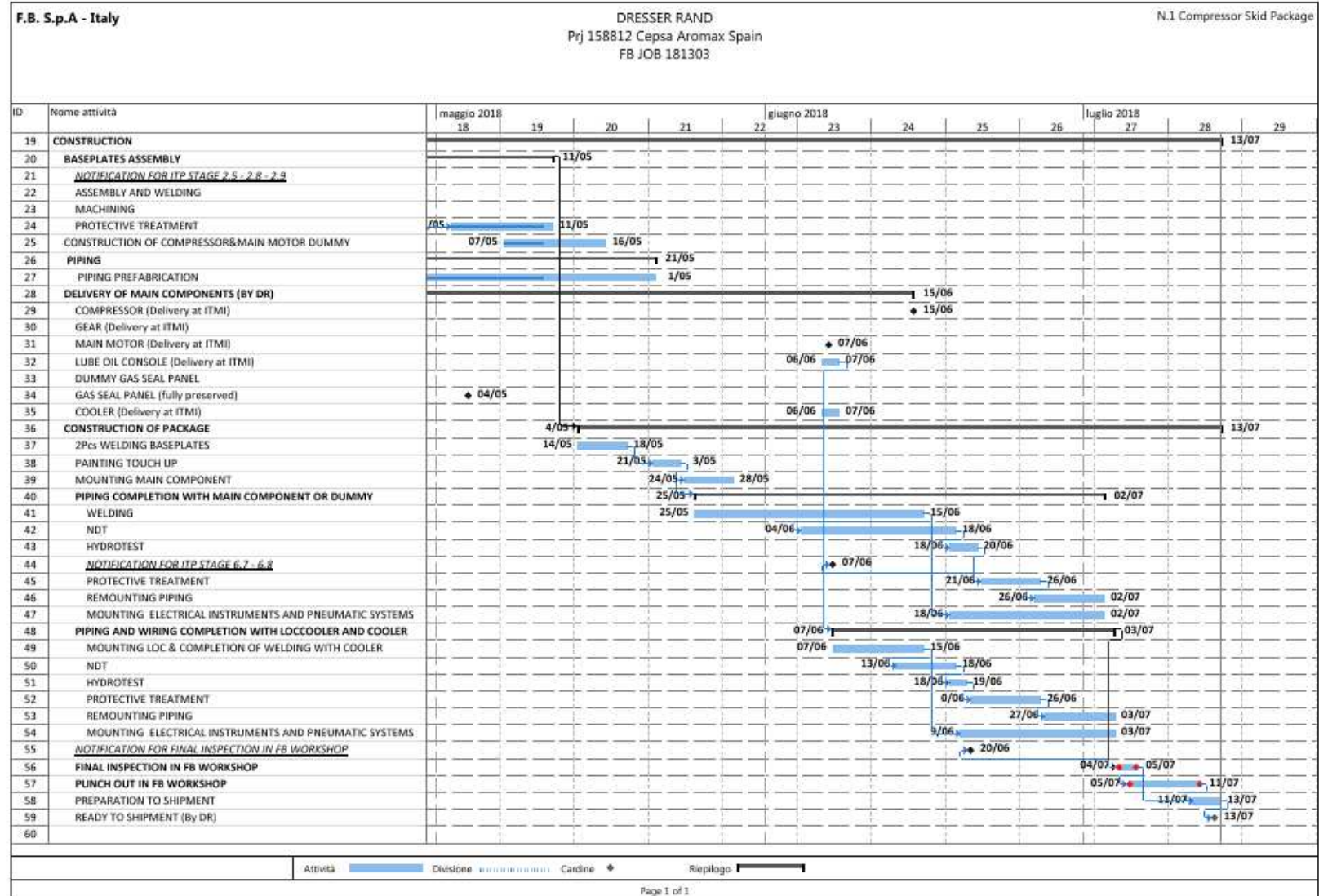
Maxus - INDONESIA

## COMPRESSOR PACKAGES DELIVERY TIME

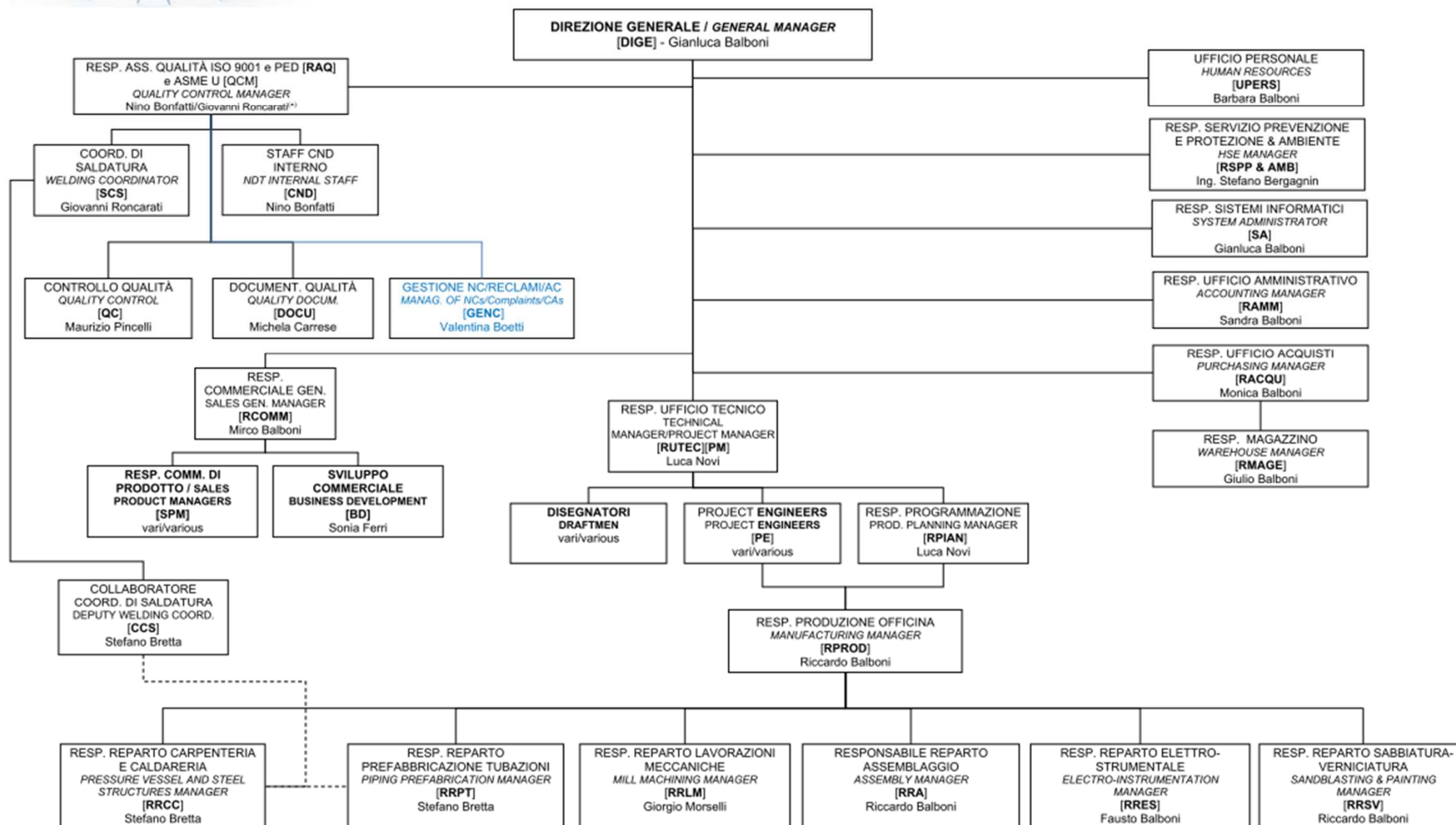




## PRODUCTION PLANNING



# HUMAN RESOURCES



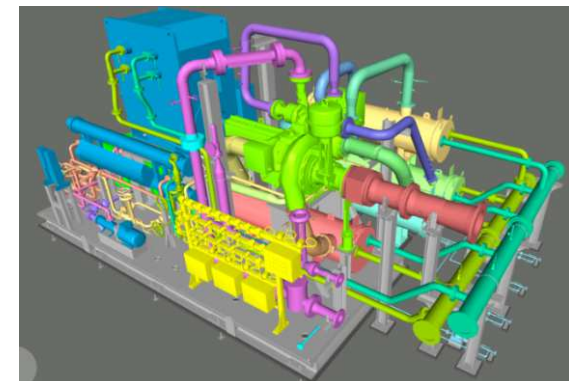
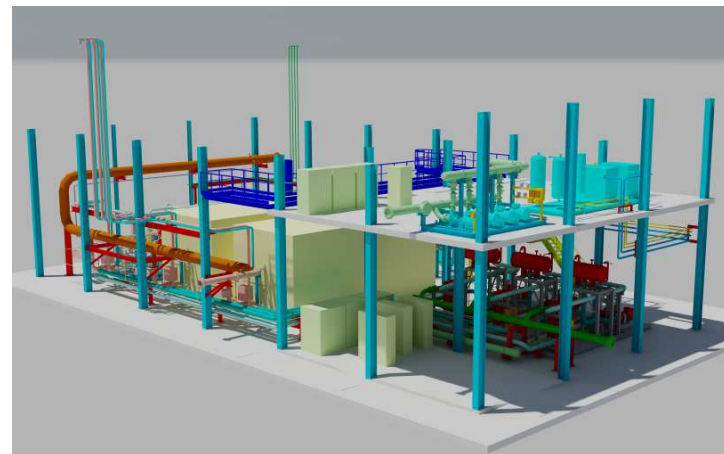
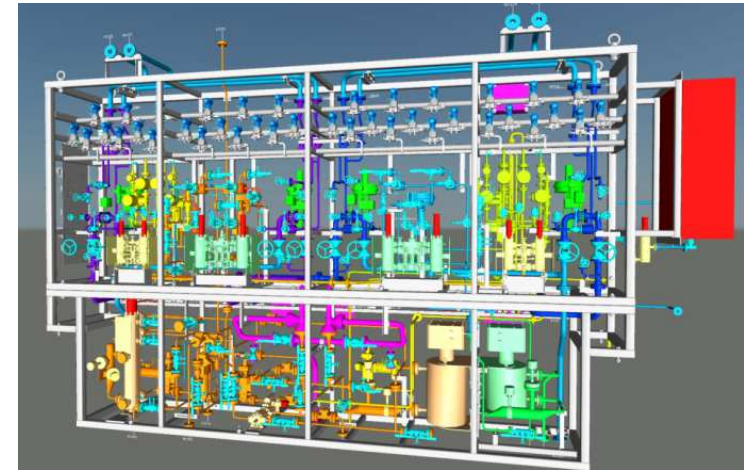
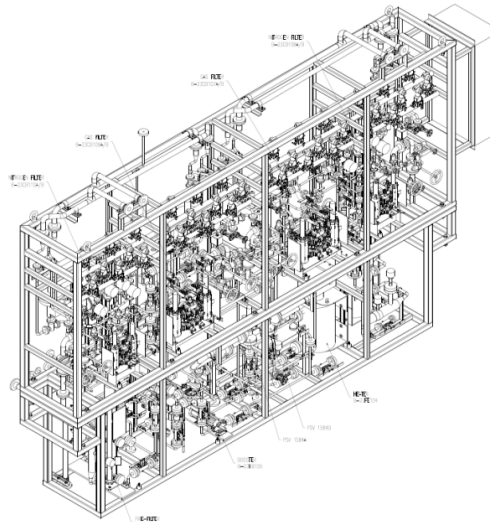


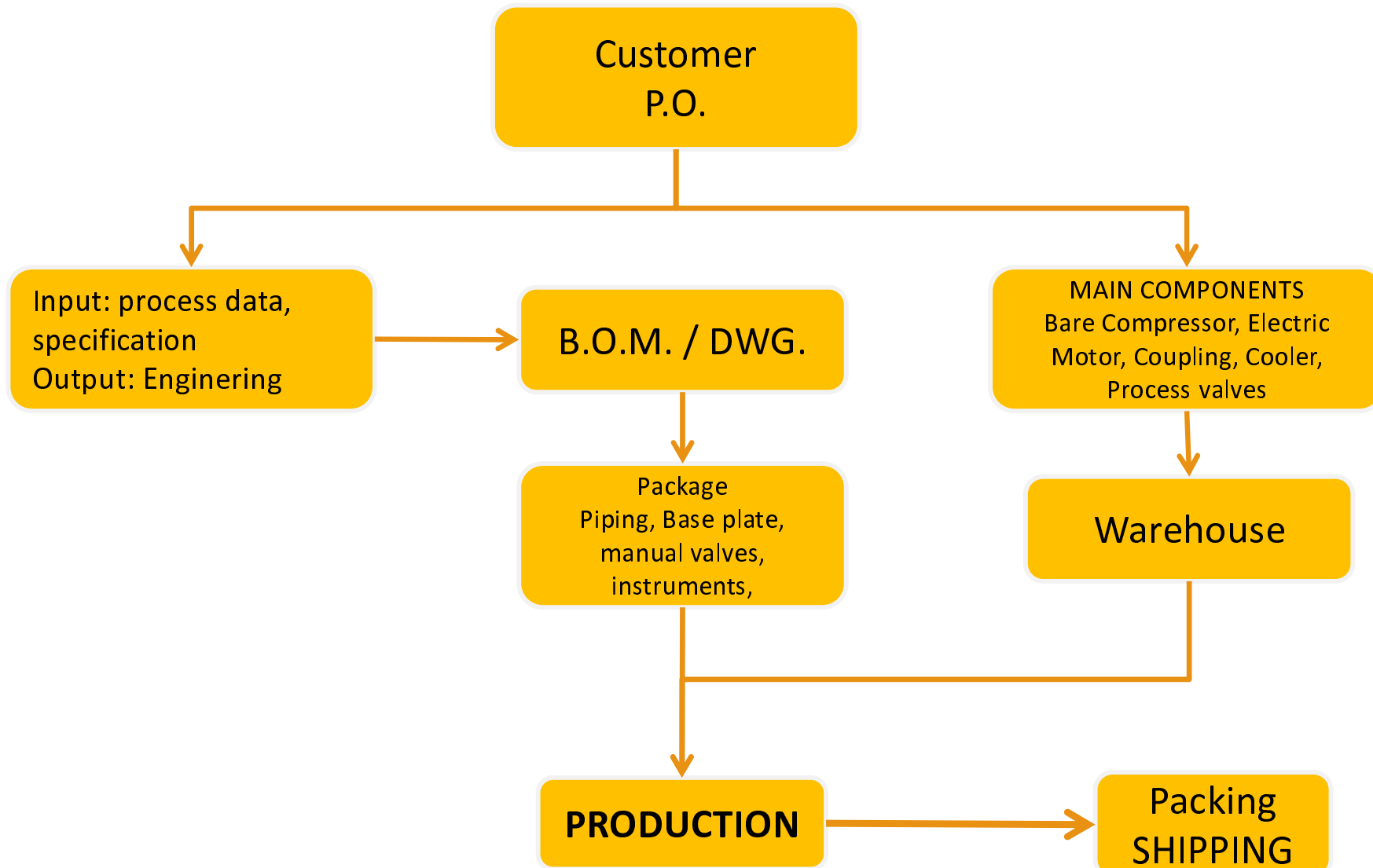
## OUR DESIGN & TECHNICAL APPLICATIONS



AUTODESK®  
AUTOCAD®

AUTODESK®  
INVENTOR® PROFESSIONAL





THE MANUFACTURING PROCESS





# COMPANY CERTIFICATION



# COMPANY CERTIFICATION



**BUREAU VERITAS**  
Certification

**F.B. S.p.A**  
Via Cristofori, n° 2 - 44042 ALBERONE DI CENTO (FE) - ITALY

**Certified site:**  
Via Cristofori, n° 2 - 44042 ALBERONE DI CENTO (FE) - ITALY

Bureau Veritas Certification Holding SAS - UK Branch certifies that the Management System of the above organisation has been audited and found to be in accordance with the requirements of the management system standards detailed below

**ISO 9001:2015**

*Scope of certification*

Design and production of base plates for gas turbine, boiler and pipelines, cooling and lubrications, filtering and separation systems, assembly of compressors, gas indirect heaters finished with electropneumatic systems.

**BUREAU VERITAS**  
Certification

**CERTIFICATE OF CONFORMITY  
OF THE FACTORY PRODUCTION CONTROL**

Certificate number 1370-CPR-0524

In accordance with Regulation 305/2011/EU of the European Parliament and of the Council of 9 March 2011 (Construction Products Regulation - CPR), this certificate applies to the construction product

PRODUCTS	STRUCTURAL COMPONENTS FOR STEEL STRUCTURES
CHARACTERISTICS*	Execution Class: up to EXC 3 included CE Marking Method: 3a, 3b

placed on the market under the name or trade mark of:

**BUREAU VERITAS**  
Certification

**F.B. SPA**  
Head Office and Operative Site:  
Via Cristofori, 2 - 44042 ALBERONE DI CENTO (FE) - ITALY

Bureau Veritas Italia spa certifies that the Management System of the above organisation has been audited and found to be in accordance with the requirements of the management system standards detailed below

*Standard*

**UNI EN ISO 3834-2:2006**

Certification	Scope	Year of first audit
ISO9001	Design, construction, inspection and testing of piping and pressure equipments, skid mounted industrial equipments and relevant instrumental systems. Design and construction of steel structures.	2004
EN1090	Structural Components for Steel Structures	2013
PED MOD.H	Pressure Vessel, Interconnecting piping, Assembly Skid	2009
UNI EN ISO 3834-2	Construction of welded steel structures and pressure equipments	2013
ASME U	Manufacture of pressure vessels	2000
National Board - AUTH	Authorization to apply the National Board mark and register boilers and pressure vessels	2000

Bureau Ver applicato di seguito è si UE ed è co Bureau. Vieni manifattura the provisor apply to it.

Fabbricante (Nome) / Manufacturer (Name): FB S.p.A.  
Indirizzo / Address: Via Cristofori, 2  
44042 Alberone di Cento (FE)  
Italy  
FB S.p.A.

Nome - Marchio commerciale: / Trading Name - Mark  
Descrizione dell'attrezzatura / Equipment description: Pressure Vessel, Interconnecting Piping; Assembly Skid.  
Identificazione delle attrezzature (o elenco allegato ove necessario): See Annex  
Identificazione di equipment concerned (or list on the back or attached where necessary)

**NB**

This is to certify that  
F.B. S.p.A. ITMI  
Via Cristofori, 2  
Alberone Di Cento  
Ferrara 44042  
Italy

is authorized to apply the "NB" mark and register boilers, pressure vessels or other pressure retaining items with the National Board.

The scope of Authorization is limited to items manufactured in accordance with:

ASME Designator(s): U, U2

authority granted by this Certificate of Authorization are subject to the provisions of the agreement set forth in the application. Any construction stamped with this certification mark shall have been built strictly in accordance with the provisions of the ASME Boiler and Pressure Vessel Code.

COMPANY:

F.B. S.p.A. ITMI  
Via Cristofori, 2  
Alberone Di Cento  
Ferrara 44042  
Italy

SCOPE:

Manufacture of pressure vessels at the above location only



# MAIN PARTNERSHIPS



Nuovo Pignone S.r.l.



Mayekawa Italia S.r.l.





Via Cristofori, 2 - 44042  
Alberone di Cento (FE)  
ITALY

info@fbitmi.it – www.fbitmi.it -- fb@pec.fbitmi.it  
V.A.T. number 01401530389  
Phone: +39 (0)51 684 0811 – Fax: +39 (0)51 684 0867

Follow us on:



<https://www.linkedin.com/company/f-b-spa-itmi>



<https://www.youtube.com/channel/UCiUZCC-967IwaBiiubBHSTQ>



*Last Ed.: June 2022*